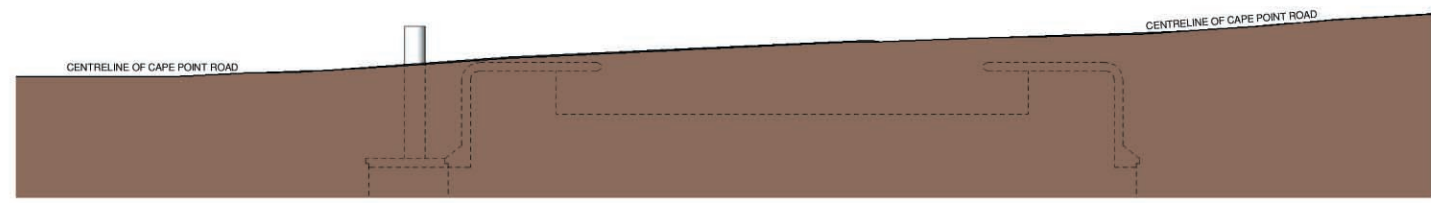


NORTHERN ELEVATION
1 : 50

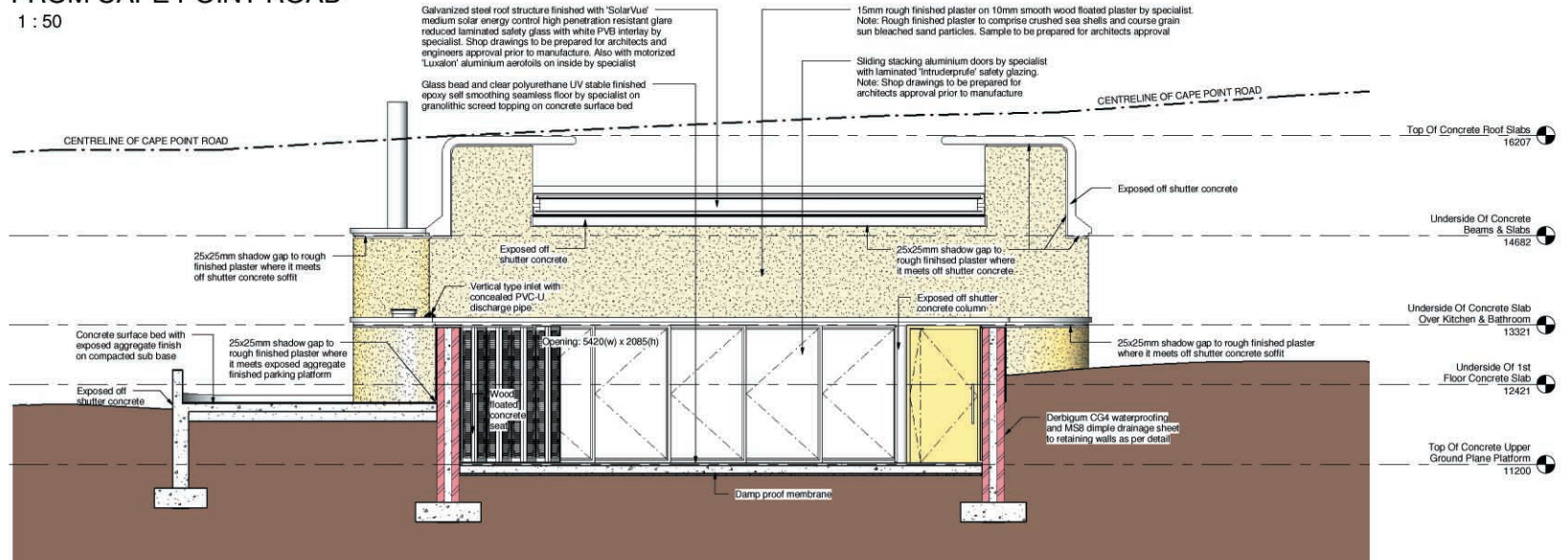
NOTE: Exposed off shutter concrete columns, beams and soffits. Smooth, dense and well-compacted concrete showing the slight grain marks of smooth shutterboards with well-filled joints and sound arises, with a surface within degree of accuracy 1 complying with SANS 10155. The bars only to be used where absolutely necessary and once the layout of such tie-bars has been agreed with the architects and engineers. Connecting of blinishes to be discussed with architects prior to execution of any such repair work. Sample panel to be cast for the approval of architects and engineers.

NOTE: Concrete surface bed to engineer's specifications and details with 19mm diameter crushed river bed pebble face up exposed aggregate. Exposed aggregate slabs to be laid on sub base to engineer's specifications and details on compacted fill to engineer's specifications and details. Exposed aggregate finish to be achieved using 'ABE / Fosroc' 'Face - Up' surface applied chemical for exposed aggregate finishes with preparation and application as per manufacturer's specifications and recommendations. All isolation joints and sawn joints to be done in accordance with engineer's specifications and details. Sawn joints to be cut within the time frame specified by the engineers. Sample panel to be cast for the approval of architects and engineers.

NOTE: Glass bead and clear polyurethane UV stable finished epoxy self smoothing seamless floor finish by specialist (Colour to be specified by architect) on 35mm thick granolithic - aggregate, sand and cement - screed topping on concrete surface bed to engineers specifications and details on damp proof membrane on 30mm thick compacted sand binding on compacted fill to engineers specifications and details. Preparation and application of epoxy self smoothing seamless floor, glass bead and clear polyurethane UV stable finish to be done in accordance with manufacturer's specifications, details and recommendations. Granolithic - aggregate, sand and cement - screed topping to be done in accordance with the recommendations and good practice manuals of the 'Cement & Concrete Institute (manuals are downloadable from www.cci.org.za/newslet.html)'. Screed topping to conform with all performance specifications deemed necessary by epoxy flooring specialist. Damp proof membrane to comply with SANS 952. Damp proof membrane to be laid in largest practical sizes with 200mm laps. Laps to be sealed in accordance with the manufacturer's specifications and details.



WESTERN ELEVATION AS VIEWED FROM CAPE POINT ROAD
1 : 50



WESTERN ELEVATION AS VIEWED FROM COURTYARD
1 : 50

SPECIFICATIONS
All work to be done from figured dimensions only. All work must comply with National Building Regulations SABS 0400. All dimensions and levels to be confirmed on site prior to the commencement of work. All dimensions to be confirmed on site before producing shop drawings or manufacturing of any component. All dimensions to be confirmed on site before ordering of any component.

STEELWORK & GALVANIZING
All steelwork components to be formalized as shop drawings and issued for courtesy scrutiny by the architects and the engineers. Manufacture of steel components may only commence once shop drawings have been approved by the architects and the engineers. Sounding of shop drawings by the architects and the engineers is a courtesy and does not absolve the contractor nor sub-contractors from their responsibility of correctly manufacturing and installing steel components. All steelwork to be hot dip galvanized. All hot dip galvanizing to be carried out in accordance with SANS 121 (ISO 1461) and the recommendations of The Hot Dip Galvanizers Association of Southern Africa. All steel to be cut, grinded, drilled and welded prior to galvanizing. Any deviation from the architects drawings and engineers drawings to be approved by the architects and the engineers and formalized as shop drawings. On site cutting, grinding, drilling and welding may only be done with the approval of both the architects and the engineers. All repair work to galvanizing to be done using 'Zincfix' zinc rich epoxy paint and to comply with SANS 121 (ISO 1461).

NOT FOR CONSTRUCTION

Rev.	Description	Date	Drawn
4	Finalized for submission to council	17/12/2016	R.M.G
3	Issued for discussion with client	24/09/2016	R.M.G
2	Water sink level included	26/06/2016	R.M.G
1	Issued to Ross Cameron	09/06/2016	R.M.G

Jo Noero is a registered architect with the SACAP - Reg. No. 3064
Heinrich Wolff is a registered architect with the SACAP - Reg. No. 5550



136 Bultengracht
P.O. Box 1058 Cape Town 8000
Tel: (021) 422-1840
Fax: (021) 422-1842
robert@noerowolff.com
www.noerowolff.com

Project Title: House Herman	
Client: Mr. & Mrs. Hugh & Jennifer Herman	
Site Location: Erf. 27 Castle Rock	
Drawing Title: WESTERN & NORTHERN ELEVATIONS	
Date of Print: 2011/02/24 12:51:09 PM	Date of Copy:
Drawing No: 202	Revision No: 4

0 cm
30 cm
0 cm
0 cm